

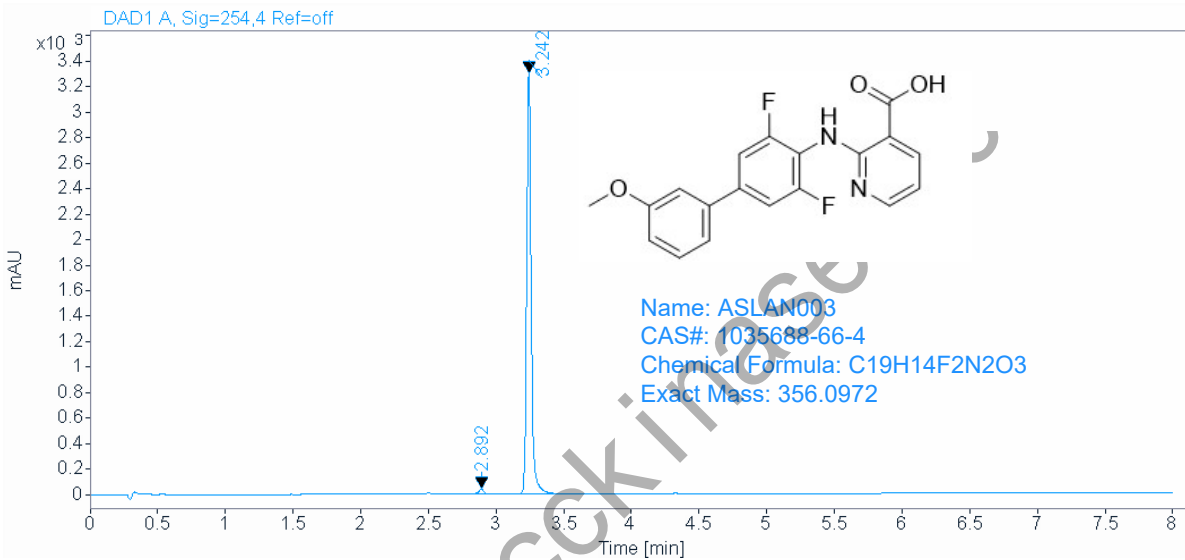
Area Percent Report



Agilent Technologies

Data file: E:\HPLC\data\TEST\00CJK 2020-11-30 10-32-26\001-P2-F1-m610-32-29.D
Sample name: m6
Instrument: 2DLC
Injection date: 11/30/2020 10:35:12 AM
Acq. method: F0.6 254nm.M
Analysis method: F0.6 254nm.M
Sample type: Sample
Location: P2-F1
Injection: 1 of 1
Injection volume: 5.000

FLOW RATE : 0.6ml/min
COLUMN : ACE C18 50*2.1 2um
COLUMN TEMPERATURE : 30
GRADIENT PROGRAMME :
TIME(MIN) MOBILE PHASE-A(H2O+0.1TFA) MOBILE PHASE-B(CH3CN+0.1TFA)
0 90% 10%
6 0% 100%
8 0% 100%



Signal: DAD1 A, Sig=254,4 Ref=off

RT [min]	Type	Width [min]	Area	Height	Area%	Name
2.892	MM	0.0302	67.1503	36.9982	0.8637	
3.242	BB	0.0396	7707.8359	3255.5439	99.1363	
	Sum		7774.9863			