

Area Percent Report

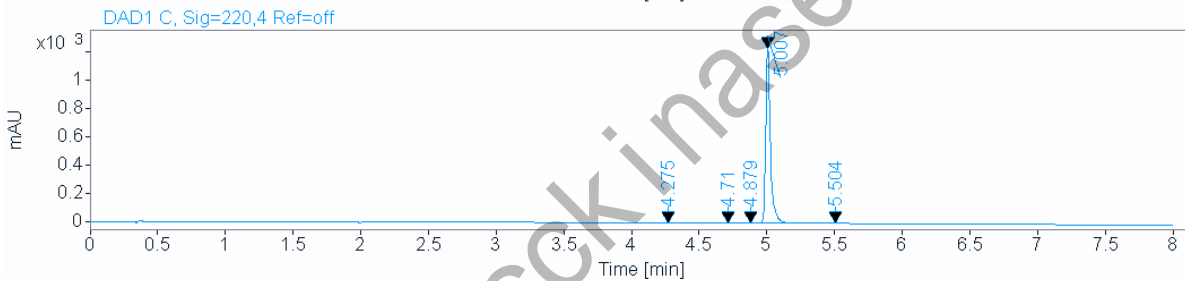
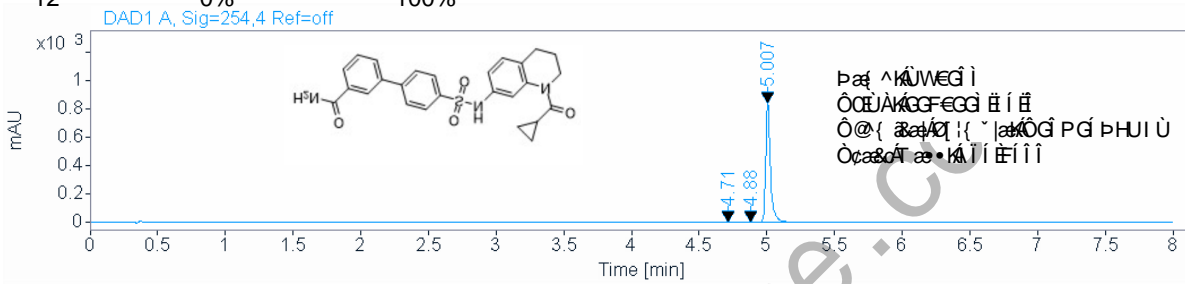


Agilent Technologies

Data file: E:\HPLC\data\TEST\00B0 2021-11-16 11-19-09\004-P1-E4-mg11-48-11.D
Sample name: mg
Instrument: 2DLC **Sample type:** Sample
Injection date: 11/16/2021 11:49:03 AM **Location:** P1-E4
Acq. method: F0.6-1 254nm.M **Injection:** 1 of 1
Analysis method: F0.6-1 254nm.M **Injection volume:** 0.200

FLOW RATE : 0.6ml/min
 COLUMN : ACE C18 50*2.1 2um
 COLUMN TEMPERATURE : 30
 GRADIENT PROGRAMME :
 TIME(MIN) MOBILE PHASE-A(H2O+0.1TFA) MOBILE PHASE-B(CH3CN+0.1TFA)

0 100% 0%
 10 50% 50%
 12 0% 100%

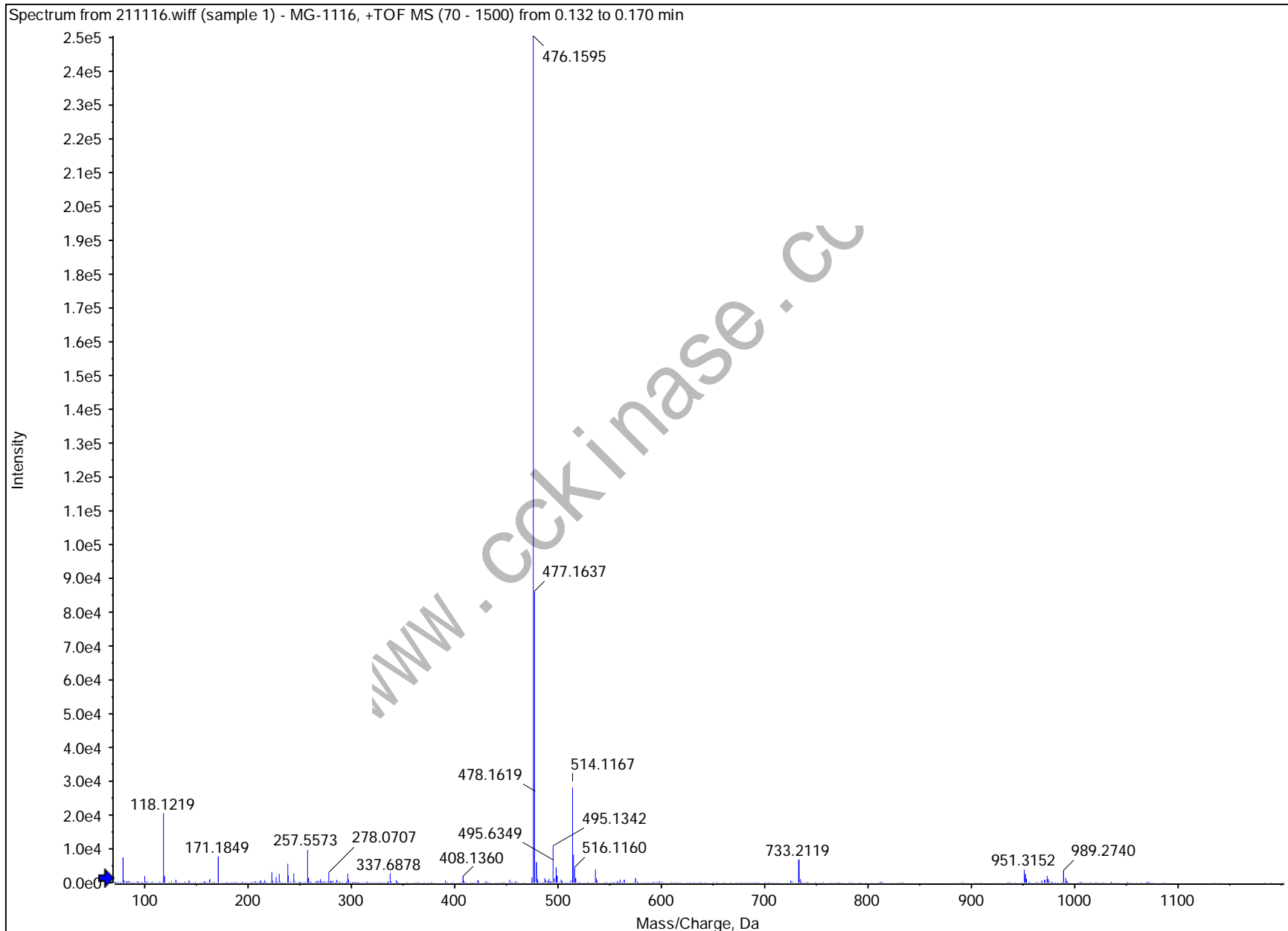


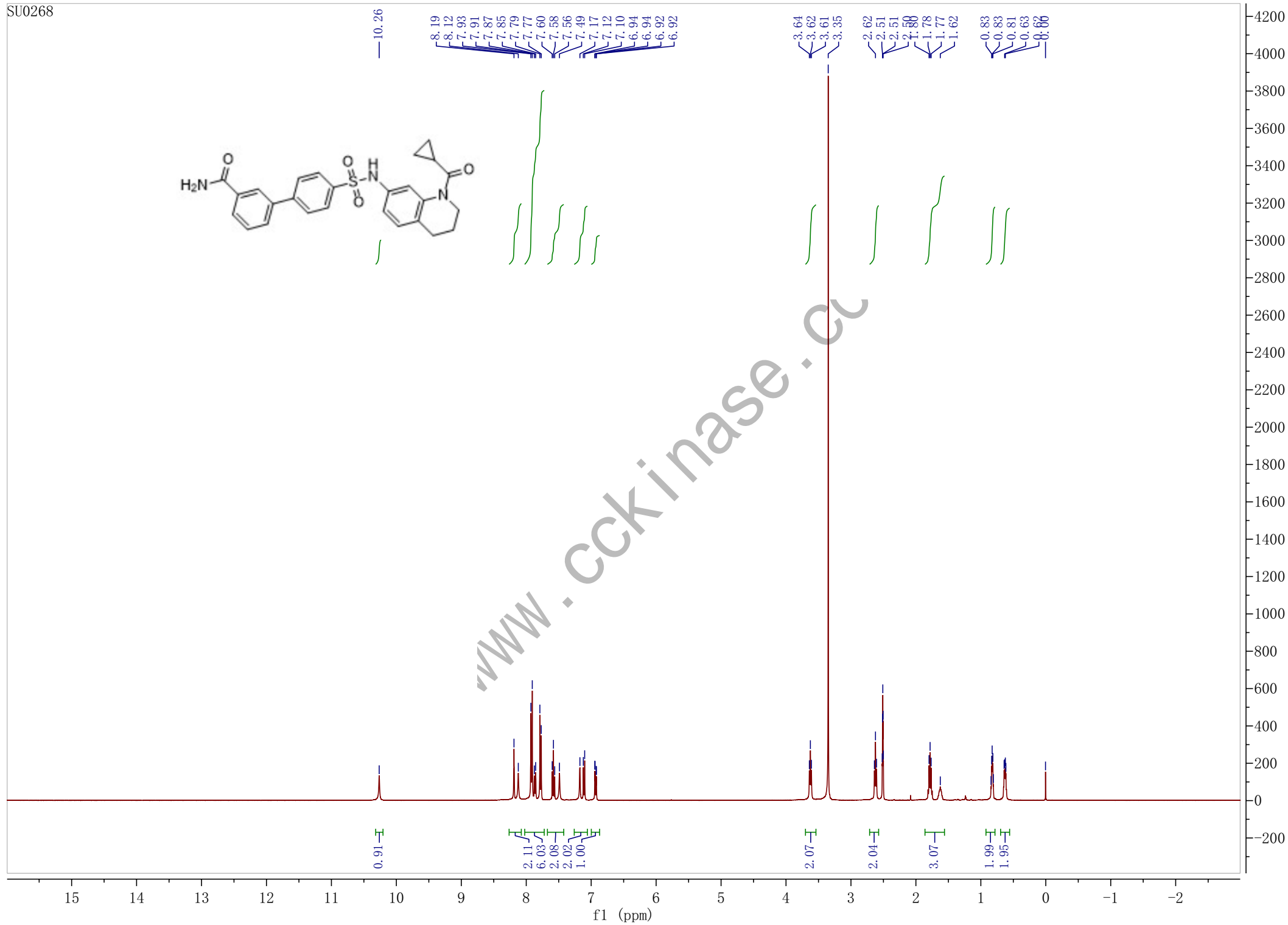
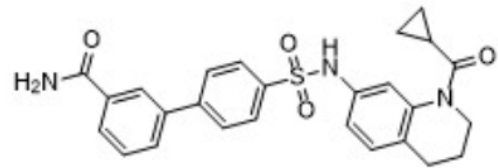
Signal: DAD1 A, Sig=254,4 Ref=off

RT [min]	Type	Width [min]	Area	Height	Area% Name
4.710	MM	0.0322	1.5156	0.7849	0.0745
4.880	BB	0.0284	0.7873	0.4512	0.0387
5.007	BB	0.0361	2032.9442	843.4867	99.8868
		Sum	2035.2471		

Signal: DAD1 C, Sig=220,4 Ref=off

RT [min]	Type	Width [min]	Area	Height	Area% Name
4.275	BB	0.0313	0.8187	0.4099	0.0272
4.710	BB	0.0324	1.4827	0.7093	0.0493
4.879	BB	0.0295	1.2627	0.6855	0.0420
5.007	BB	0.0361	2994.0940	1241.1763	99.6400
5.504	BB	0.0686	7.2529	1.7054	0.2414
		Sum	3004.9109		





www.cckinase.com