

Area Percent Report

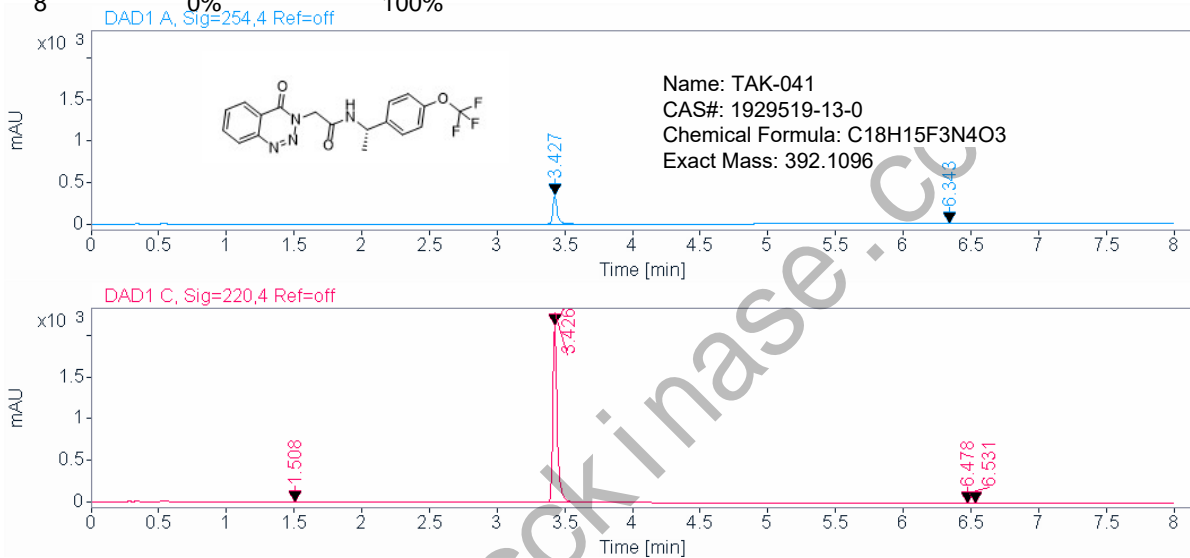


Agilent Technologies

Data file: E:\HPLC\data\TEST\00B0 2021-11-19 11-18-54\004-P1-C10-TAKD4111-47-44.D
Sample name: TAKD41
Instrument: 2DLC **Sample type:** Sample
Injection date: 11/19/2021 11:48:23 AM **Location:** P1-C10
Acq. method: F0.6 254nm.M **Injection:** 1 of 1
Analysis method: F0.6 254nm.M **Injection volume:** 0.600

FLOW RATE : 0.6ml/min
 COLUMN : ACE C18 50*2.1 2um
 COLUMN TEMPERATURE : 30
 GRADIENT PROGRAMME :
 TIME(MIN) MOBILE PHASE-A(H2O+0.1TFA) MOBILE PHASE-B(CH3CN+0.1TFA)

0 90% 10%
 6 0% 100%
 8 0% 100%



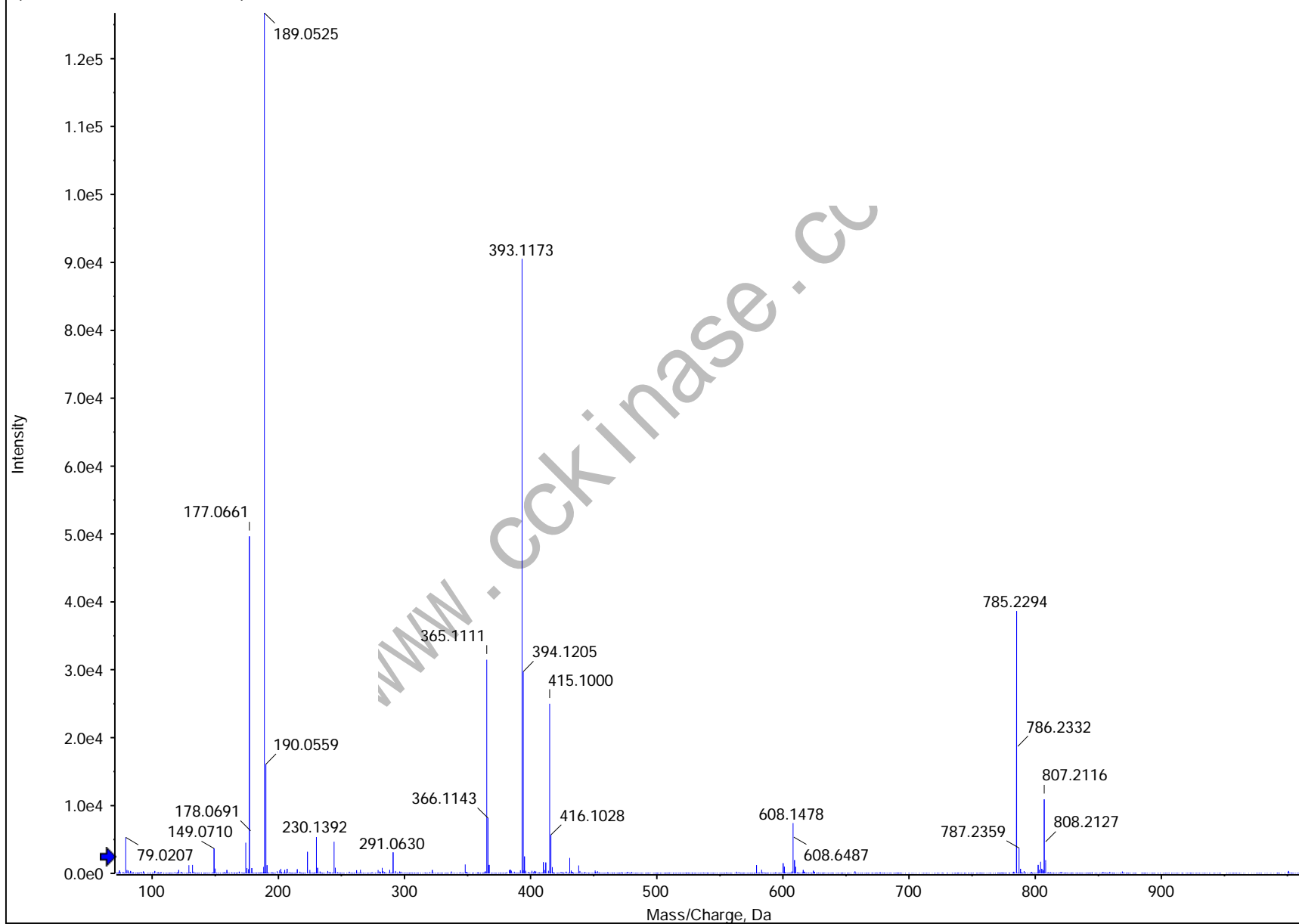
Signal: DAD1 A, Sig=254,4 Ref=off

RT [min]	Type	Width [min]	Area	Height	Area%	Name
3.427	BB	0.0392	777.6771	334.0206	99.5135	
6.343	BB	0.1339	3.8017	0.3578	0.4865	
Sum			781.4788			

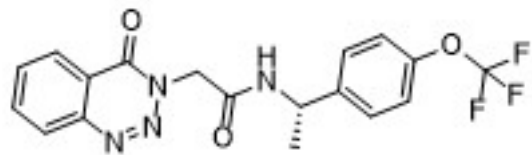
Signal: DAD1 C, Sig=220,4 Ref=off

RT [min]	Type	Width [min]	Area	Height	Area%	Name
1.508	BB	0.0508	1.4930	0.3978	0.0306	
3.426	BB	0.0345	4868.0806	2143.6023	99.9330	
6.478	BB	0.0248	0.8090	0.5300	0.0166	
6.531	BB	0.0277	0.9616	0.5683	0.0197	
Sum			4871.3441			

Spectrum from 211119.wiff (sample 1) - TAKD41, +TOF MS (70 - 1500) from 0.137 to 0.168 min



TAK041



8.84
8.82
8.22
8.20
8.09
7.95
7.43
7.32
7.29

5.06
4.97
4.95
4.93

3.30

2.47

1.38
1.36
1.20

-0.03

1.00

4.11

4.09

3.19

3.24

15 14 13 12 11 10 9 8 7 6 5 4 3 2 1 0 -1 -2 -3 -4

f1 (ppm)

550
500
450
400
350
300
250
200
150
100
50
0
-50